



## Trowbridge Area Board Report September 2016

Hello and welcome to your Community Policing report. The summer months and holiday season are now coming to an end and hope you've all had a very relaxing time. This is traditionally the time when we all relax a little bit, meetings are re-arranged, offices are bare and the local parks are full. The Community Policing Team are here 24/7 over the summer months and we continue to work with our partner agencies to address the issues that matter most within the community. I hope you all have a safe and enjoyable summer.

### **CHILD SEXUAL EXPLOITATION (CSE)**

In line with our control strategy, I would like to talk about Child Sexual Exploitation (CSE) in this month's report.

Sexual exploitation of children and young people under 18 involves exploitative situations, contexts and relationships where the young person (or third person/s) receive 'something' (e.g. food, accommodation, drugs, alcohol, cigarettes, affection, gifts, money) as a result of them performing, and/or others performing on them, sexual activities.

Child sexual exploitation can occur through the use of technology without the child's immediate recognition; for example being persuaded to post images on the internet/mobile phones without immediate payment or gain.

Violence, coercion and intimidation are common. Involvement in exploitative relationships is characterised by the child's or young person's limited availability of choice, as a result of their social, economic or emotional vulnerability. A common feature of CSE is that the child or young person does not recognise the coercive nature of the relationship and does not see themselves as a victim of exploitation.

Gemstone is Wiltshire Police's response to CSE. The dedicated Police team working under Gemstone provides specialist guidance and support to departments within Wiltshire Police and works with other professionals to provide a co-ordinated approach to identifying and tackling CSE.

### **Warning signs**

Despite the increased profile of CSE and improvements in how the police work with partner agencies, CSE cases are still under-reported. Warning signs can be categorised under the following headings.

## **Emotional and behavioural development**

- Changes in temperament or suffering from depression, mood swings or changes in emotional wellbeing
- Secretive behavior
- Peers and friends – association with other young people involved in exploitation and having older boyfriends/girlfriends
- Getting involved in petty crime such as shoplifting or stealing.

## **Education**

- Being absent and truanting or showing signs of disengagement, e.g., lack of interest and frequent poor behaviour
- Considerable change in performance.

## **Identity**

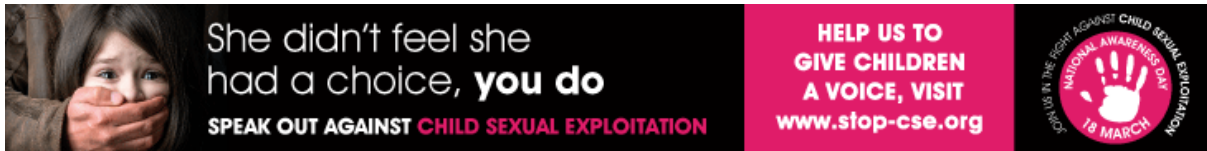
- Appearing with unexplained gifts or new possessions
- Change in appearance, e.g. different clothes

## **Family and social relationships**

- Children or young people who become estranged from their family
- Sudden hostility towards family members
- Becoming physically aggressive towards family and friends
- Going missing for periods of time or regularly returning home late
- Involvement in exploitative relationships or association with risky adults
- Young people being found in towns or districts where they have no known connection
- Young people who have more than one boyfriend or who share their boyfriend
- Children or young people seen entering or leaving vehicles driven by unknown adults
- Becoming detached from age-related activities and social groups
- Being sexually active
- Receiving phone calls and/or text messages from unknown adults
- Children or young people who appear to be recruiting others into exploitative situations.

## **Health**

- Evidence of drug, alcohol and/or substance use - abusers may use drugs and alcohol to help control children and young - people
- Unexplained physical injuries or suffering from physical injuries (eg, bruising suggestive of either physical or sexual assault)
- Children or young people who are self-harming and demonstrating suicidal thoughts and tendencies
- Recurring sexually transmitted infections
- Pregnancy or seeking an abortion
- Children or young people displaying inappropriate sexualised behaviours, such as being overfamiliar with strangers or sending sexualised images via the internet or mobile phones
- Changes in physical appearance



Below are some key contacts and referral pathways if you feel that someone is at risk of CSE.

### **Wiltshire Safeguarding Children Board**

[www.wiltshirelscb.org](http://www.wiltshirelscb.org)

Website includes information for children and young people  
Parents and carers about keeping children safe.

### ■■Barnardo's

[www.barnardos.org.uk](http://www.barnardos.org.uk)

National children's charity which provides  
information, advice and support about child sexual  
exploitation.

### ■■NSPCC

[www.nspcc.org.uk](http://www.nspcc.org.uk)

National children's charity which provides  
information, advice and support about child  
sexual exploitation.

### ■■CEOP Safety Centre

<http://ceop.police.uk/safetycentre/>

Advice for children, young people and  
adults regarding child sexual exploitation.

### ■■PACE (Parents Against Child Exploitation)

[www.paceuk.info](http://www.paceuk.info)

National charity working with parents and carers whose  
children are sexually exploited.

## **COMMUNITY MESSAGING**

We have been talking a lot publically about Community Messaging over recent months and I have included the link below and would continue to encourage you to spread the message to your communities, encouraging as many people as possible to sign up. We have found that this really is a key platform to get the right message to the right people at the right time.

We are constantly reviewing our visibility and how we can develop this and work with our communities. We cannot physically be everywhere all of the time and we want to ensure consistent information with our communities and to be able to provide the information that matters to you when you need it. There has been some good feedback from our new way of working using Community Messaging so please sign up and use it.

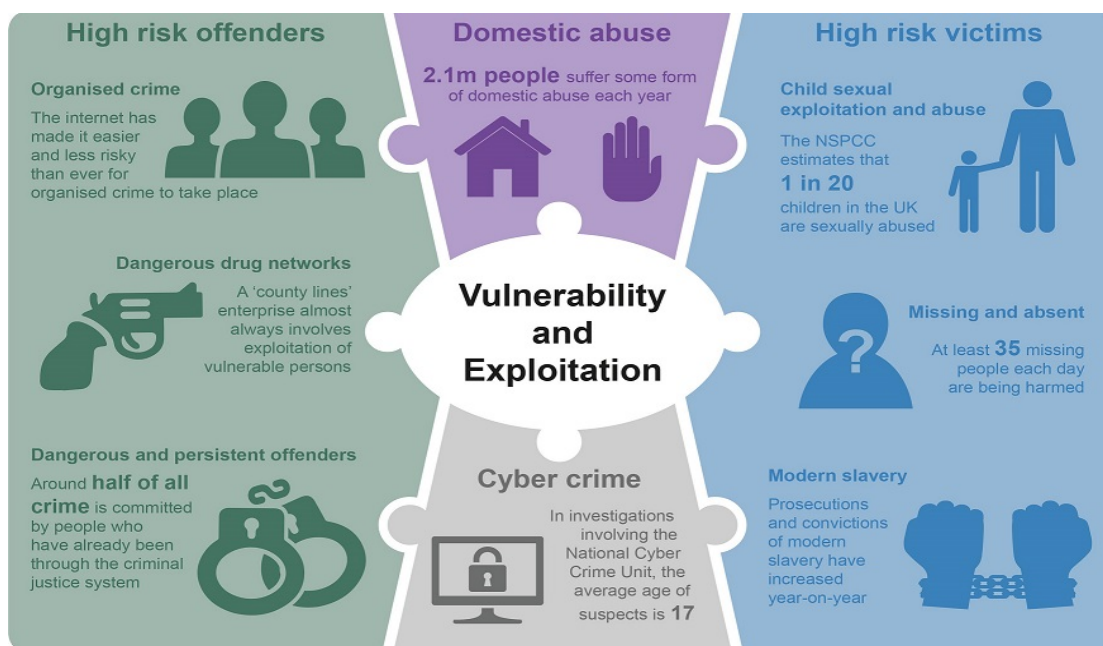
<https://www.wiltsmessaging.co.uk/>

[feedback@wiltshire.police.uk](mailto:feedback@wiltshire.police.uk)

## CONTROL STRATEGY

Below is our control strategy for your reference. This focuses on where how we conduct our operational Policing based on the Police & Crime Plan. We will continue to align our resources with the threat/harm/risks presented in line with the control strategy.

- Domestic abuse / Cyber Crime / High risk offenders / High risk victims



## LOCAL CRIMES

We have experienced some dwelling Burglaries where car keys, and subsequently cars, have been stolen. These are currently low in number and we have managed to locate and recover the vehicles and enquiries are ongoing into these offences. Please can we remind everyone to ensure that car keys are not left in a clearly prominent position within your home address and look to deny further opportunities should you experience a burglary.

We continue to see higher than expected number of bicycles stolen. DC Kevin Keast is currently reviewing and co-ordinating our responses to the ongoing thefts. Please can we remind everyone to purchase a good lock for your bicycles and take all preventative measures available. We are continuing our investigations but at this time, do not believe that they are all linked due to the information available to us.

There has been an ongoing drive with your local Community Policing Team and partner agencies to address the street drinking within Trowbridge Town Centre. The positive news is the placement of a 2 year Criminal Behavior Order on Kenneth Beavis a well-known local man. Mr Beavis was later arrested for breaching the order and he subsequently received a 16 week custodial sentence at court. It is hoped that this will lead to his long term rehabilitation. We have further enforcement planned and are continuing our efforts in this area but welcome all the continued support.

For a detailed breakdown of the crime in your area visit...

<https://www.police.uk/wiltshire/>

**James Brain**

**Community Policing Team Inspector**

**Trowbridge & Warminster**

[feedback@wiltshire.police.uk](mailto:feedback@wiltshire.police.uk)